

KING ABDULLAH PORT

BULK AND GENERAL CARGO TERMINAL



PORT TARIFF
2018



Prince Sultan Street
Al Zahra District, Lotus Building
P.O.Box 4843, Jeddah 23425
Kingdom of Saudi Arabia
T: +966 12 2212 111
info@amsteel.com | www.amsteel.com



Tariff Book 2018

**For the King Abdullah Port
Located in King Abdullah Economic City of the Kingdom of Saudi Arabia**

**Issued on : February 18, 2018
Effective from : April 1, 2018**

**PORT DEVELOPMENT COMPANY
Address: 46 Entaj Street Building No.1 Industrial Valley, King Abdullah Economic City
23989**

**PO box: 48501, Jeddah 21582 , Saudi Arabia
Email: info@portsdevco.com
Tel: +966122339888|Fax: +966569513456**

**AMSTEEL LLC
Prince Sultan Street
Al Zahra District, Lotus Building
P.O.Box 4843, Jeddah 23425
Kingdom of Saudi Arabia
T: +966 12 2212 111
info@amsteel.com | www.amsteel.com**

TABLE OF CONTENTS

1. INTRODUCTION

Page

- KING ABDULLAH PORT..... 4
- PORTS DEVELOPMENT COMPANY..... 5
- AMSTEEL..... 6

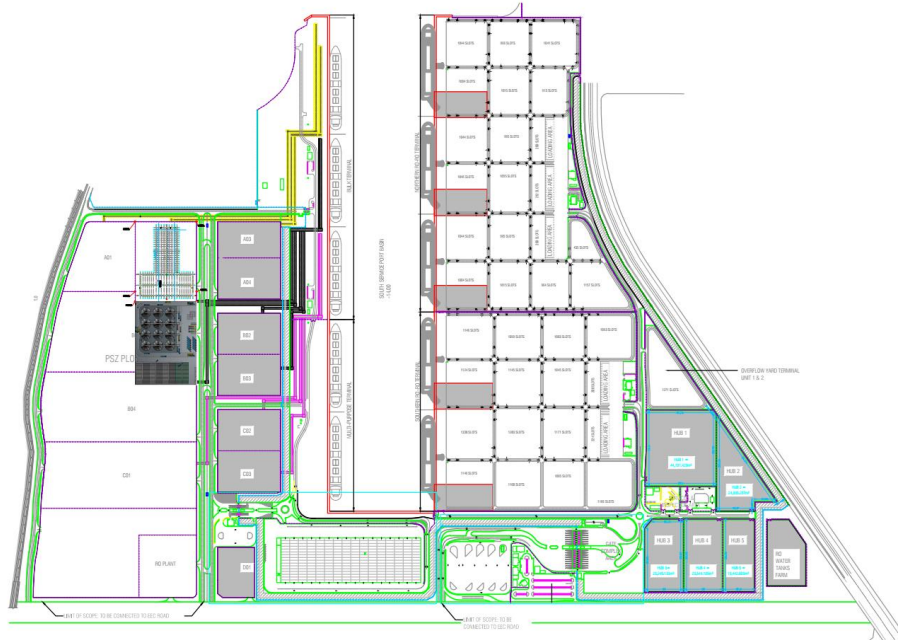
2. PORT TARIFF

- CHARGES COLLECTED FROM THE OWNER
OR AGENT OF THE VESSEL (EXPORT AND IMPORT)..... 8
- CHARGES COLLECTED FROM THE OWNER
OR AGENT OF THE VESSEL (TRANSIT AND TRANSHIPMENT)... 10
- CHARGES COLLECTED FROM THE CONSIGNEE / SHIPPER..... 12

3. ADDITIONAL SERVICES TARIFF

- **WAREHOUSING FEES**
 - Open Area..... 14
 - Covered Area..... 14
- **EQUIPMENT RENTAL FEES**
 - Forklift..... 14
 - Mobile Harbour Crane..... 14
 - Earth Moving Equipment..... 14
- **TRANSPORTATION**
 - Port area – Stock area vice versa..... 15
 - Weighbridge Usage..... 15

KING ABDULLAH PORT BULK TERMINALS



King Abdullah Port is the Kingdom of Saudi Arabia's newest port facility, located in King Abdullah Economic City. It is a full-service commercial port with a highly strategic location. The Port will deliver world-class service by means of state-of-the-art computer systems and a highly experienced staff.

The first privately owned and funded port in the Kingdom of Saudi Arabia, the port is regulated and overseen by ECA as single regulator – this is the foundation for a streamlined experience.

The bulk cargo berths will be connected to the Processes and Services Zone (PSZ) via convey belts and pipe lines. The facility will be ideal for industries importing raw material and requiring transfer by automated means (i.e. convey belts and pipe lines). The terminal will be served by a dedicated South Service Gate.

King Abdullah Port will handle general and project cargo through its various facilities. The cargo will be discharged by quay cranes and geared vessels. The general cargo terminal will be able to discharge palletized and non-palletized cargos in addition to cargos requiring special lifting capabilities.

- Capacity: 15,000,000 tons
- Length: 1,420 M
- Depth: 14 M

PORTS DEVELOPMENT COMPANY

Ports Development Company, owner and developer of King Abdullah Port, in realization of the importance of the human element within the organization, implemented extensive training and certification programs of key areas of the port operations to specialized staff in Europe. Best case practices and know-how skills across multiple disciplines within the port industry were especially tailored and targeted to furthermore nurture the expertise of local teams that will bring with them exceptional port services to the local market.

Port Development Company aims to position King Abdullah Port, as a unique example of world-class excellence for providing valuable benefits for long-term users from the public and private sectors, as well as the constant quest to integrate and work side by side with Saudi Ports System to enhance the capabilities and operational efficiency to meet the increasing demand for the movement of import and export, and providing the requirements for the construction of major vital projects, meeting the requirements of comprehensive development renaissance that the Kingdom is currently witnessing.

King Abdullah Port, owned and developed by Ports Development Company at King Abdullah Economic City, is the first port being developed and managed by the private sector. The port is characterized by its strategic geographical location, with integrated services through the practice of the most advanced technologies and the use of local and international experts to provide the best services. The port has been included among the largest global shipping lines, through setting a well-established business plan to develop the port at a steady pace and a clear vision to become one of the leading major ports in the world.

AMSTEEL

AMSTEEL is 100% Saudi owned company which focused on port and steel services located in King Abdullah Port of King Abdullah Economic City.

In 2015 AMSTEEL was established to provide logistic services to mainly steel producers and traders who need port accesses. With the support of King Abdullah Port, AMSTEEL successfully provided high quality services to main port users.

In 2016 AMSTEEL started to support local companies for their rebar and structural steel needs by providing some solutions such as, cut and bend, sand blasting, logistics etc....

In 2017, after successful promoting King Abdullah Port, AMSTEEL became terminal operator for bulk, break bulk, and general cargo vessels which want to use King Abdullah Port.

2018 - till today AMSTEEL has handled more than hundreds of thousands of tons of different kinds of products such as scrap metal, rebar, HBI, billets, general cargo, heavy lift cargo etc...

Company's customer and solution-oriented approach makes AMSTEEL unique solution provider for the industries which need continues port access. AMSTEEL provides to its customers highest quality of service with the highest safety standards. Continues information availability, easy access to facilities along with open door policy makes AMSTEEL as a strong partner for port users of the Kingdom of Saudi Arabia.

AMSTEEL objective is to provide world class port and steel services to Kingdom of Saudi Arabia in line with country vision 2030.

PORT SERVICES

- Stevedoring for bulk, break bulk, general cargo and multi-purpose vessels
- Warehousing (open and covered)
- Heavy Lift
- "Ship to Door" or "Door to Ship"
- Availability of shore cranes, grabs, material handling machines & other machinery.



STEEL SERVICES

- Supply of Rebar and Structural Steel
- Cut and Bend Services for Rebar
- Sand Blasting
- Coating
- Distribution
- Stocking

TRANSPORTATION SERVICES

- Transport using Owned and Partner Trailers
- Custom clearing
- Dumpers for Scrap & Bulk cargo
- 24 meters length Trailers
- Heavy lift carriage

OTHER SERVICES

- Scrap Handling & Cutting
- Dumper & Trailer Sales
- Assembly
- Operator & Equipment rental

1. CHARGES COLLECTED FROM THE OWNER OR AGENT OF THE VESSEL (EXPORT AND IMPORT)

A) Charges for loading and discharging of cargo from vessels.

| ITEM | DESCRIPTION | RATE SAR | UNIT |
|-------|---------------|----------|--|
| 1.A.1 | GENERAL CARGO | 20 | PER TON OR CUBIC METER, WHICHEVER IS HIGHER, OR PART THEREOF |

NOTES:

- General cargo includes all types of cargo excluding vehicles, self-powered equipment, livestock, bulk cargo and cargo loaded on containers, flats and trailers.
- General cargo which requires special equipment and / or treatment for handling will be charged as per (1.A.1) above plus the charges for the additional services provided.

B) BULK CARGO

| ITEM | DESCRIPTION | RATE SAR | UNIT |
|-------|-------------|----------|-------------------------|
| 1.B.1 | BULK CARGO | 8 | PER TON OR PART THEREOF |

C) IDLE TIME FOR WHICH THE VESSEL OR SHIP'S AGENT IS RESPONSIBLE WILL BE CHARGED AS FOLLOWS;

| ITEM | DESCRIPTION | RATE SAR | UNIT |
|-------|--------------------------------|----------|-------------------------------|
| 1.C.1 | GENERAL AND BULK CARGO VESSELS | 200 | PER GANG HOUR OR PART THEREOF |

2. CHARGES COLLECTED FROM THE OWNER OR AGENT OF THE VESSEL (TRANSIT AND TRANSHIPMENT)

A) CHARGES COLLECTED FOR TRANSIT & TRANSHIPMENT CARGO

| ITEM | DESCRIPTION | RATE SAR | UNIT |
|-------|---------------|----------|---|
| 2.A.1 | GENERAL CARGO | 15 | PER TON OR CUBIC METER, WHICHEVER IS HIGHER OR PART THEREOF |

NOTES:

- General cargo includes all types of cargo excluding vehicles, self-powered equipment, livestock, bulk cargo and cargo loaded on containers, flats and trailers.
- General cargo which requires special equipment and / or treatment for handling will be charged as per (2.A.1) above plus the charges for the additional services provided.

B) BULK CARGO

| ITEM | DESCRIPTION | RATE SAR | UNIT |
|-------|-------------|----------|-------------------------|
| 2.B.1 | BULK CARGO | 8 | PER TON OR PART THEREOF |

**C) STORAGE CHARGES FOR GENERAL AND BULK CARGO
(TRANSIT & TRANSHIPMENT)**

| ITEM | DESCRIPTION | RATE SAR | UNIT |
|-------|-----------------|----------|---|
| 2.C.1 | STORAGE CHARGES | 0.25 | PER TON PER DAY OR PARTS THEREOF UNTIL THE DATE OF CLEARING THE CARGO OUTSIDE THE PORT. |

NOTES:

- Free time for storage is 21 days and it starts with the discharge date of the cargo to port customs premises.

3. CHARGES COLLECTED FROM THE CONSIGNEE / SHIPPER

A) CHARGES FOR PORT SERVICES FOR CARGO IMPORTED OR EXPORTED:

| ITEM | DESCRIPTION | RATE SAR | UNIT |
|-------|--|----------|-------------------------|
| 3.A.1 | GENERAL CARGO | 35 | PER TON OR PART THEREOF |
| 3.A.2 | VEHICLES (Static cargo / not wheeled) AND EQUIPMENTS | 35 | PER TON OR PART THEREOF |
| 3.A.3 | BAGGED CARGO | 20 | PER TON OR PART THEREOF |
| 3.A.4 | BAGGED CEMENT (EXPORTED) | 10 | PER TON OR PART THEREOF |

NOTES:

- General cargo includes all types of cargo excluding vehicles, self-powered equipment, livestock, bulk cargo and cargo loaded on containers, flats and trailers.
- General cargo which requires special equipment and / or treatment for handling will be charged as per (3.A.1) above plus the charges for the additional services provided.

B) BULK CARGO

| ITEM | DESCRIPTION | RATE SAR | UNIT |
|-------|----------------------------------|----------|-------------------------|
| 3.B.1 | BULK CARGO | 6 | PER TON OR PART THEREOF |
| 3.B.2 | EXPORTED BULK CEMENT AND CLINKER | 3 | PER TON OR PART THEREOF |

C) STORAGE CHARGES FOR GENERAL AND BULK CARGO (IMPORT & EXPORT)

| ITEM | DESCRIPTION | RATE SAR | UNIT |
|-------|-----------------|----------|---|
| 3.C.1 | STORAGE CHARGES | 0.50 | PER TON PER DAY OR PARTS THEREOF UNTIL THE DATE OF CLEARING THE CARGO OUTSIDE THE PORT. |

NOTES:

- Free time for storage is 21 days and it starts with the entry date of the cargo to port customs premises.

4. ADDITIONAL SERVICES

A) WAREHOUSING OUTSIDE OF THE PORT

| ITEM | DESCRIPTION | RATE SAR | UNIT |
|-------|--------------|----------|--|
| 4.A.1 | OPEN AREA | 0.5 SAR | PER TON OR CUBIC METER WHICHEVER IS HIGHER OR PART THEREOF / per day |
| 4.A.2 | COVERED AREA | 1 SAR | PER TON OR CUBIC METER WHICHEVER IS HIGHER OR PART THEREOF / per day |

B) EQUIPMENT RENTAL

| ITEM | DESCRIPTION | RATE SAR | UNIT |
|-------|----------------------------------|----------|--------------------------|
| 4.B.1 | MOBILE HARBOUR CRANES (144 tons) | 1800 | PER HOUR OR PART THEREOF |
| 4.B.2 | FORKLIFT (16 tons) | 300 | PER HOUR OR PART THEREOF |
| 4.B.3 | EARTH MOVING EQUIPMENTS | 300 | PER HOUR OR PART THEREOF |
| 4.B.4 | TRAILER | 200 | PER HOUR OR PART THEREOF |

C) TRANSPORTATION

| ITEM | DESCRIPTION | RATE SAR | UNIT |
|-------|------------------------------------|----------|--|
| 4.C.1 | PORT TO STOCK AREA (VICE VERSA) | 5 | PER TON OR CUBIC METER WHICHEVER IS HIGHER OR PART THEREOF |

D) WEIGH BRIDGE USAGE

| ITEM | DESCRIPTION | RATE SAR | UNIT |
|-------|-----------------------------|----------|----------|
| 4.D.1 | VEHICLES LESS THAN 10 TONS | 10 | PER UNIT |
| 4.D.2 | VEHICLES BETWEEN 10-50 TONS | 20 | PER UNIT |
| 4.D.3 | OVER 50 TONS | 50 | PER UNIT |

OTHER NOTES

- Port Authority holds the rights the changing, cancelling etc... this tariff anytime
- Any port user who wants to operate itself subject to operator approval
- All port users shall comply with safety standards and regulations of King Abdullah Port